



INDUSTRIES

Industrial Cleaning & Drying systems specialists

Web site: www.pioneer-industries.com

Sales Office

238 Arvin Avenue,
Stoney Creek, Ontario
Canada, L8E 2L8

Tel: 905-662-1064

Fax: 905-561-3854

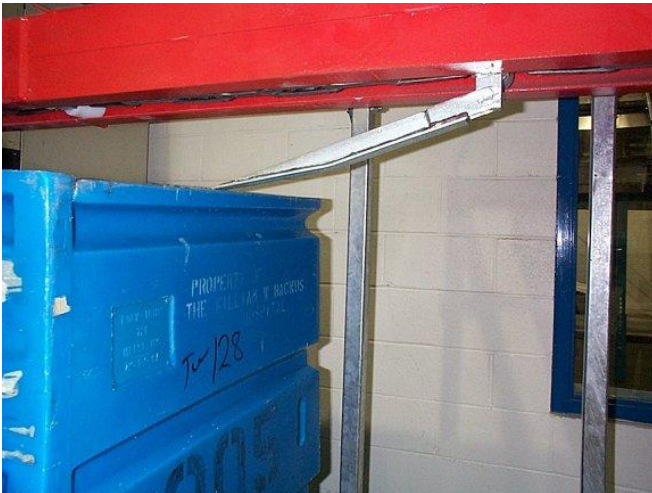
Email: sales@pioneer-industries.com

“The Pioneer Cart Handler”™

The Pioneer “*Cart Handler*”™ was developed to handle the many problems generated with the movement of laundry carts throughout a Central Laundry.

Enabling Solutions:

A -- To guarantee a sanitized Cart.” **B** -- The elimination of designated personnel to transport carts from a soiled side to the clean side. **C** -- To Separate Clean Side from soil Side personnel. **D** -- To provide orderly cart Storage **E** -- To Deliver carts Exactly where They Are Required. **(At a rate of one Cart Every Minute)**



HOW IT WORKS

Engaging the cart

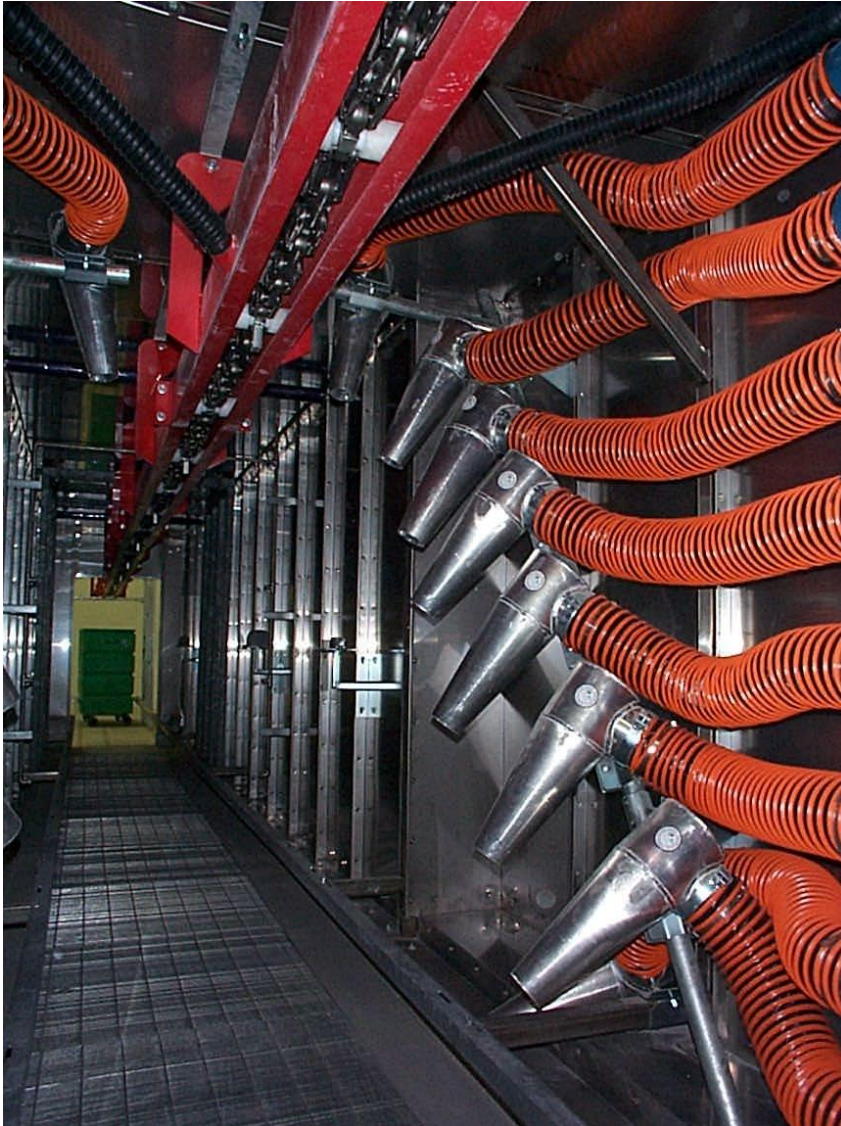
- The Conveyor is designed to automatically engage the cart on the top front lip. To achieve this, the cart is pushed into the system entrance under the conveyor pick-up.
- The hook will drop from the overhead conveyor into the top of the open cart, engaging the **front lip** as it travels forward
- **Custom hook length enables carts of various heights of to be washed at the same time.**



- **The speed of the system** can be infinitely regulated, & set not to exceed the ability to continuously load carts without spaces
- The STANDARD “*Cart Handler*”™ system is designed to operate at **ONE CART A MINUTE (This translates into 7' of chain per minute)**
- When the cart enters the **stainless steel** enclosure; the high volume pump begins

flooding the cart from every angle. The cart is effectively submerging in a **(100gpm- 380l)** wall of sanitizing chemical solution 5' long 6' high 5' wide.

- The pump will continue to run for as long as the cart is within the **Wash / Sanitizing** section
- Each time the pump is turned on, a measured amount of fresh detergent is injected into the water flow *“Chemical pump by chemical supplier”*.



City water rinse

- The final rinse is the key ingredient in the **water exchange system**, as well as enhancing the drying capabilities. When each cart passes, approximately 3 to 5 gallons of fresh water and drying agent spray on the cart.
- By Adding fresh water & chemical with every cart washed, the wash water reservoir is kept in a sanitary condition.

Blow-Off System.

The patented Cyclonic nozzle set up

- The Pioneer Cyclonic blow-off system is a unique drying technology developed and perfected for the auto industry. Its principle advantage is that it can propel and maintain a 200mile/hour air stream over a much greater distance than a conventional slot air knife. This patented design will push the majority of water off

the carts and provide a positive air pressure from the laundry clean side to the soiled side.

CUSTOMER CIVIL SERVICES REQUIRED

Concrete ----- See concrete drawing

Electrical ----- 100amp 3ph 460v or 600v – 208&220 200amp service supply to Pioneer control panel and field wiring to devices See electrical drawing for details

Plant Water -----1” tempered water required to fast fill sump, 4gpm use per cart (see drawing)

Put a PIONEER “*Cart Handler*”™ on your payroll
The state of the art in Hospital Cart Sanitizing & Handling

For further information Please contact Pioneer Industries Inc
 Sales Office Tel: 905-662-1064 Fax: 905-561-3854